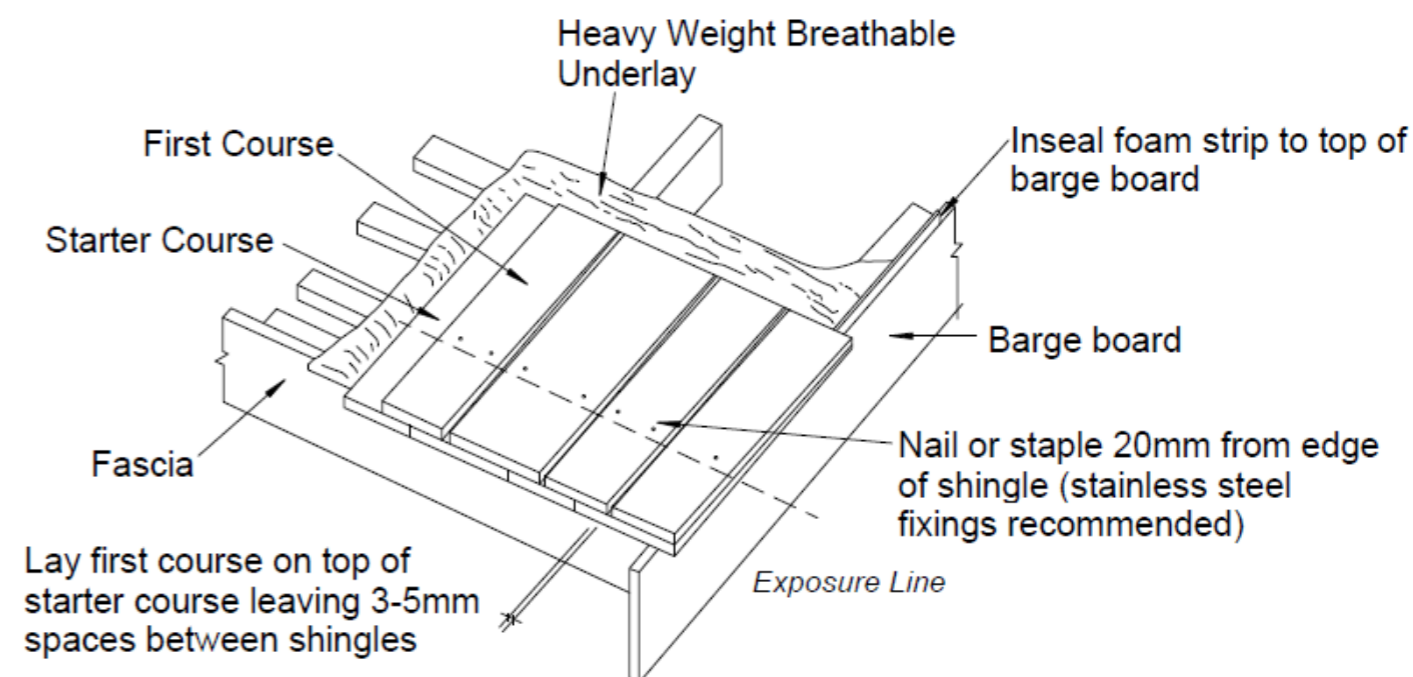
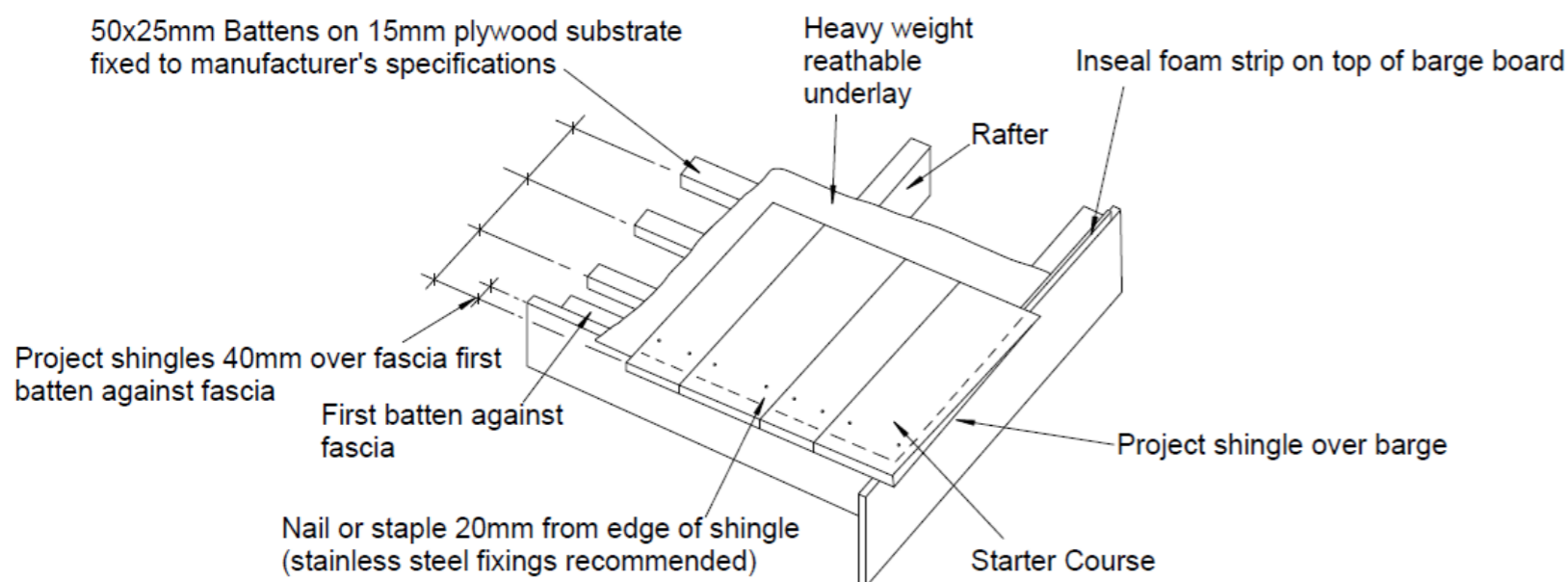


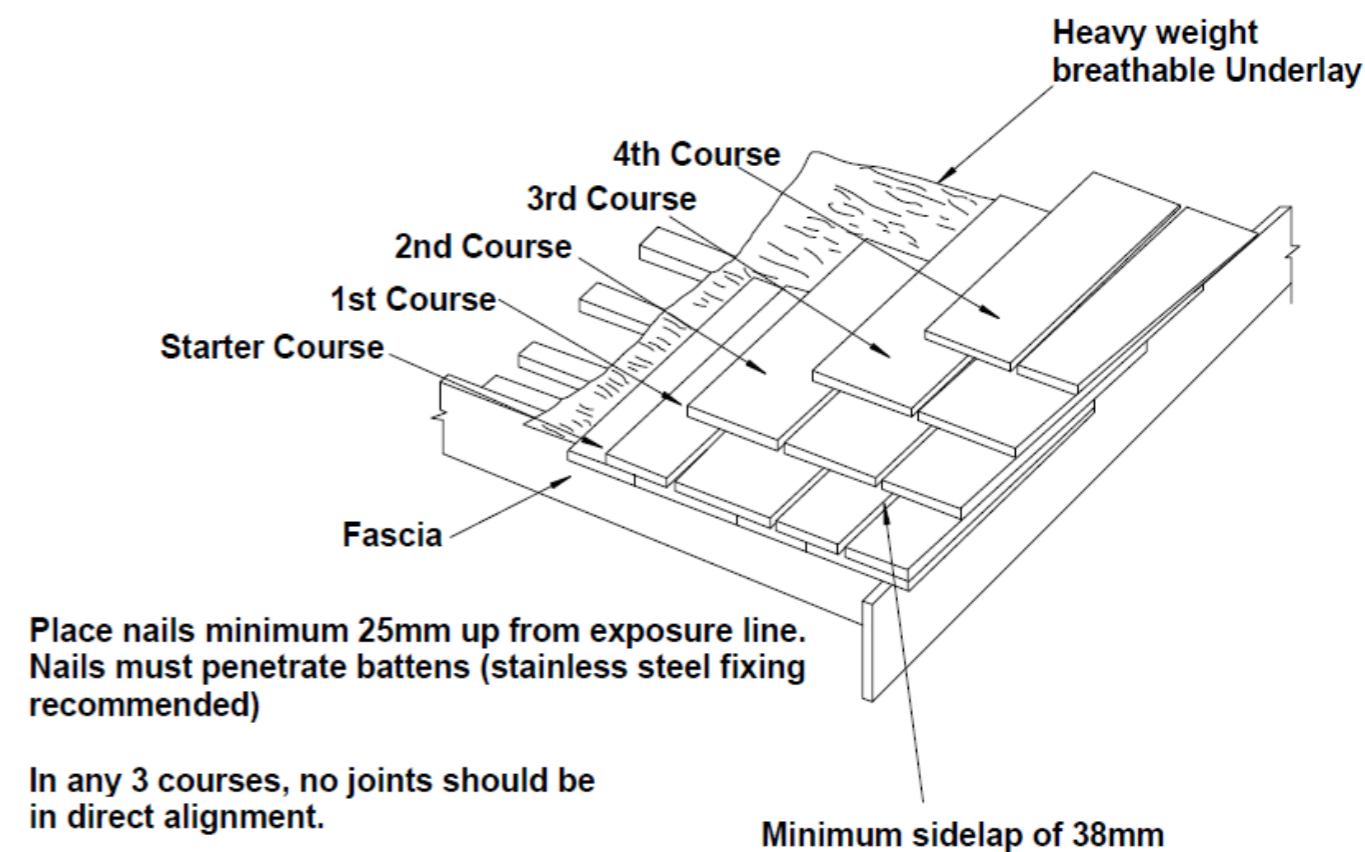
Timber Shingle/Shake Cross Section

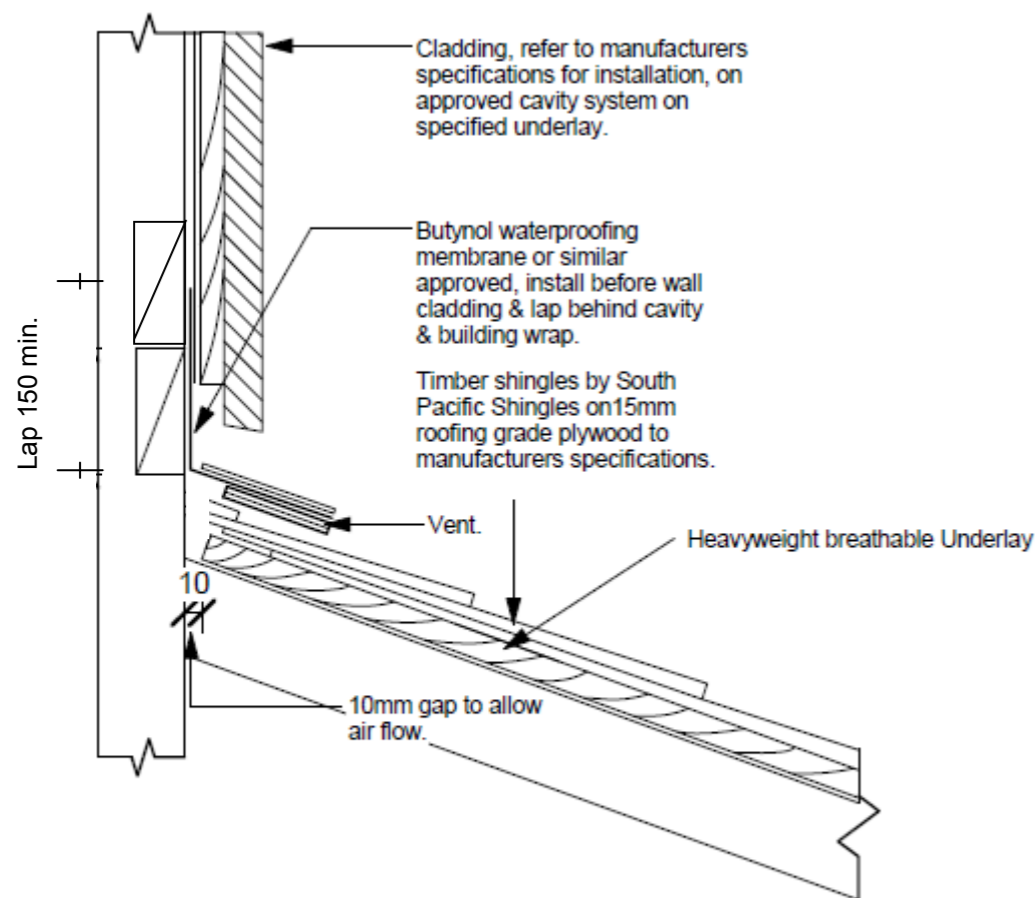


Timber Shingle/Shake First Course



Starter Course Shingles To Be Layed Without Spaces



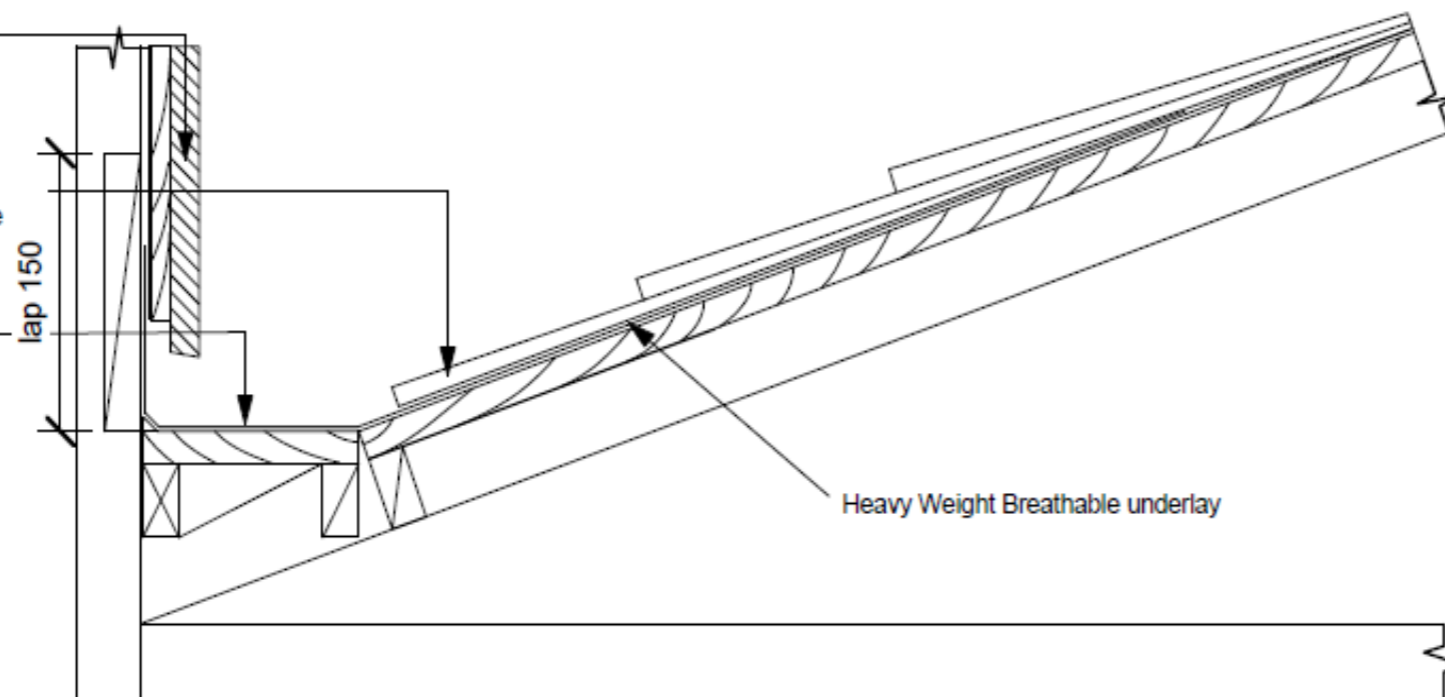


Typical Shingle Vented Apron Flashing - Roof to Wall

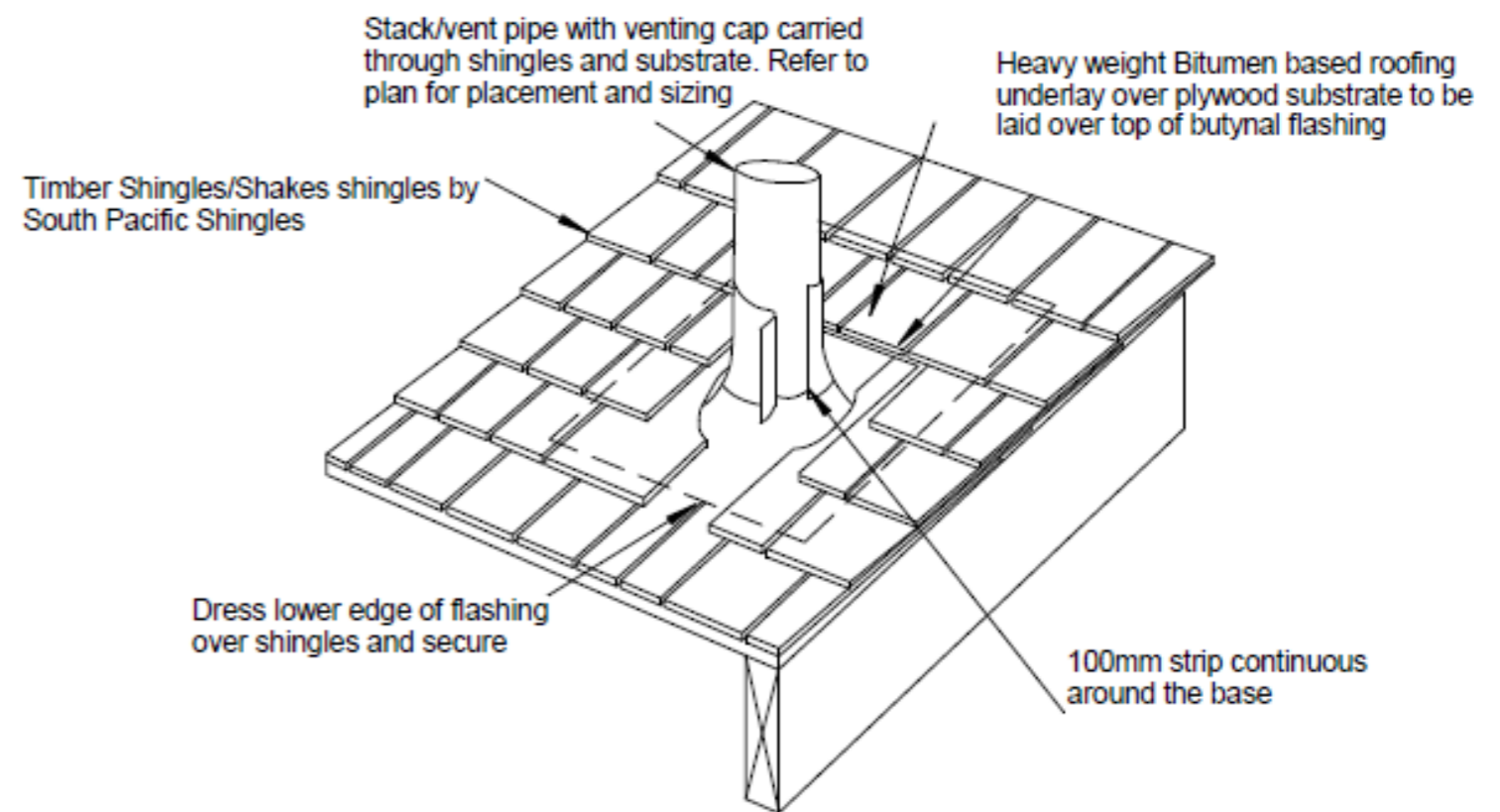
Cladding, refer to manufacturers specifications for installation, on approved cavity system on specified underlay.

Timber Shingles by South Pacific Shingles - on 15mm roofing grade plywood to manufacturers specifications.

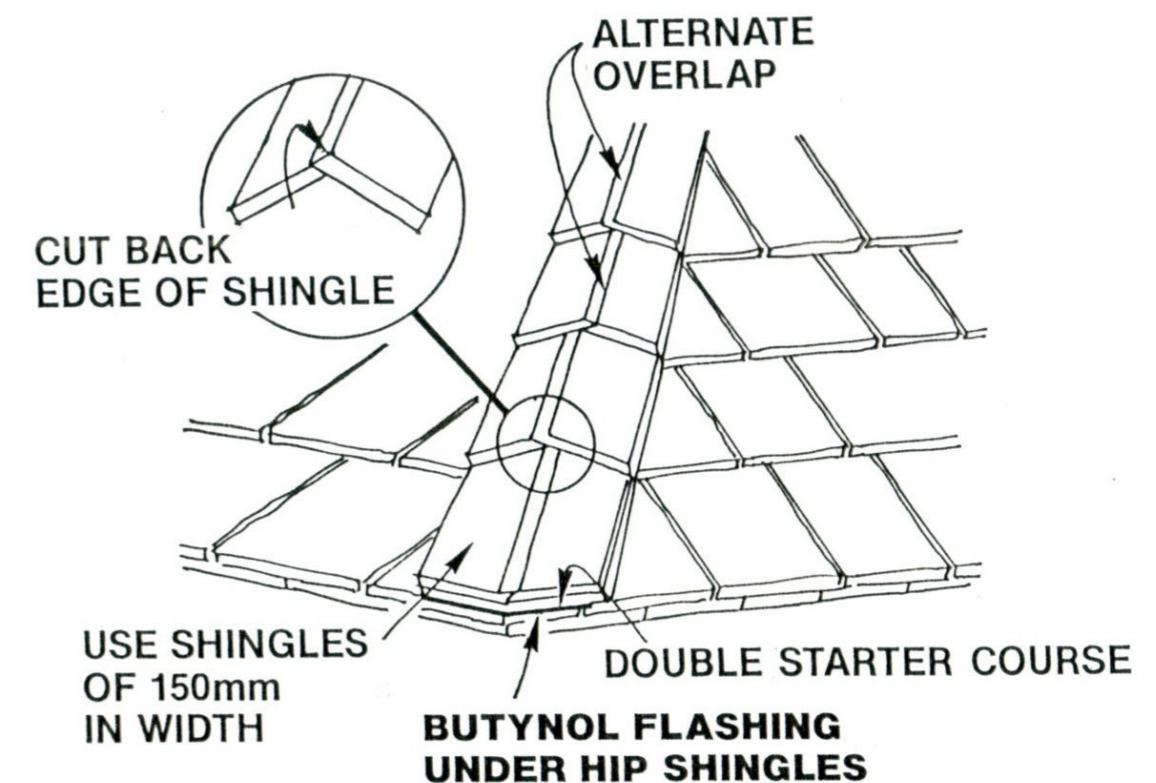
Butyl waterproofing membrane or similar approved, lap behind cladding and shingles.



Timber Shingles Chimney Flashing Detail



Timber Shingle/Shake Pipe Penetration



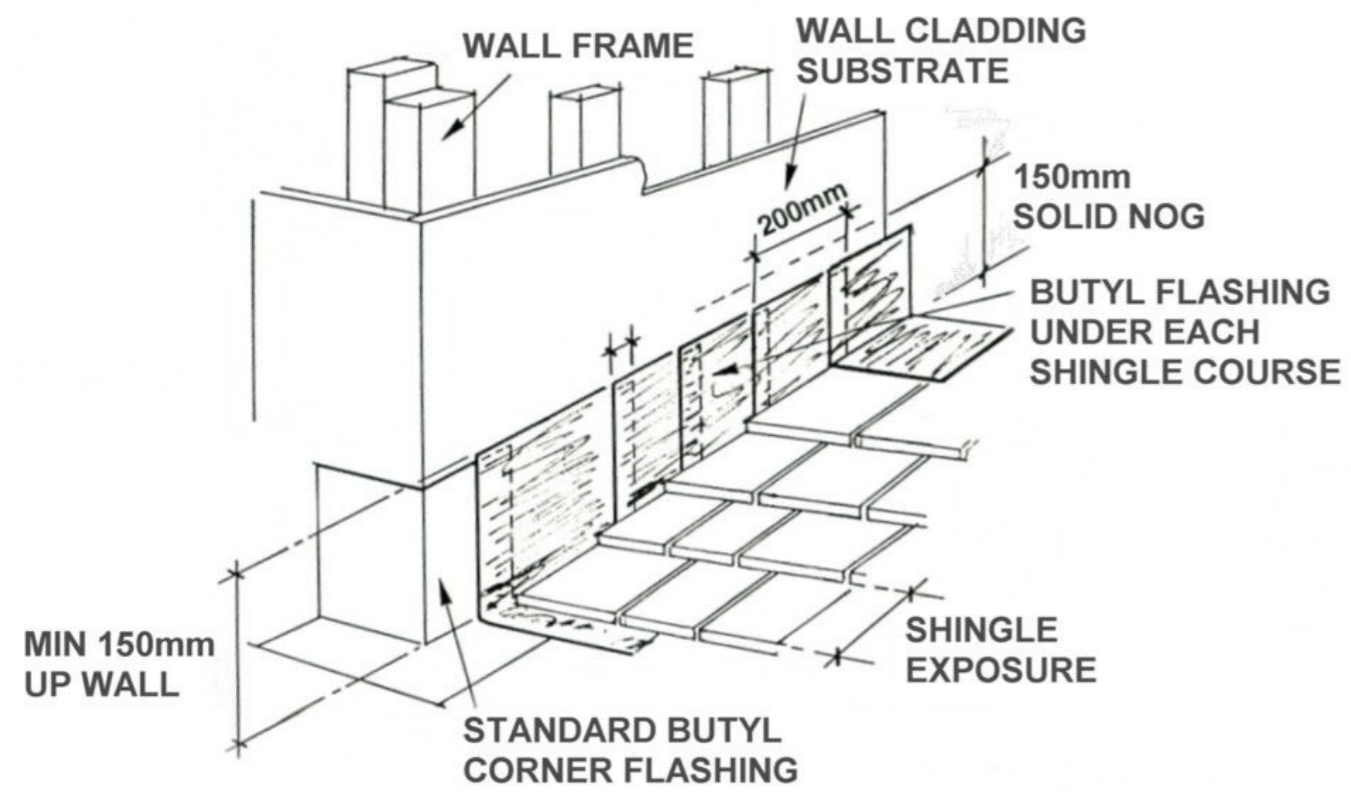
South Pacific Shingles (2003) Ltd

P.O. BOX 31000, AUCKLAND, NEW ZEALAND
21b Gabador Place, Mt Wellington
Tel: 0-9-573 3017 Fax 0-9-573 3018
Email: sales@southpacificshingles.co.nz

Section Details—Timber Shingles & Shakes

Page 2

Roof to Wall Detail



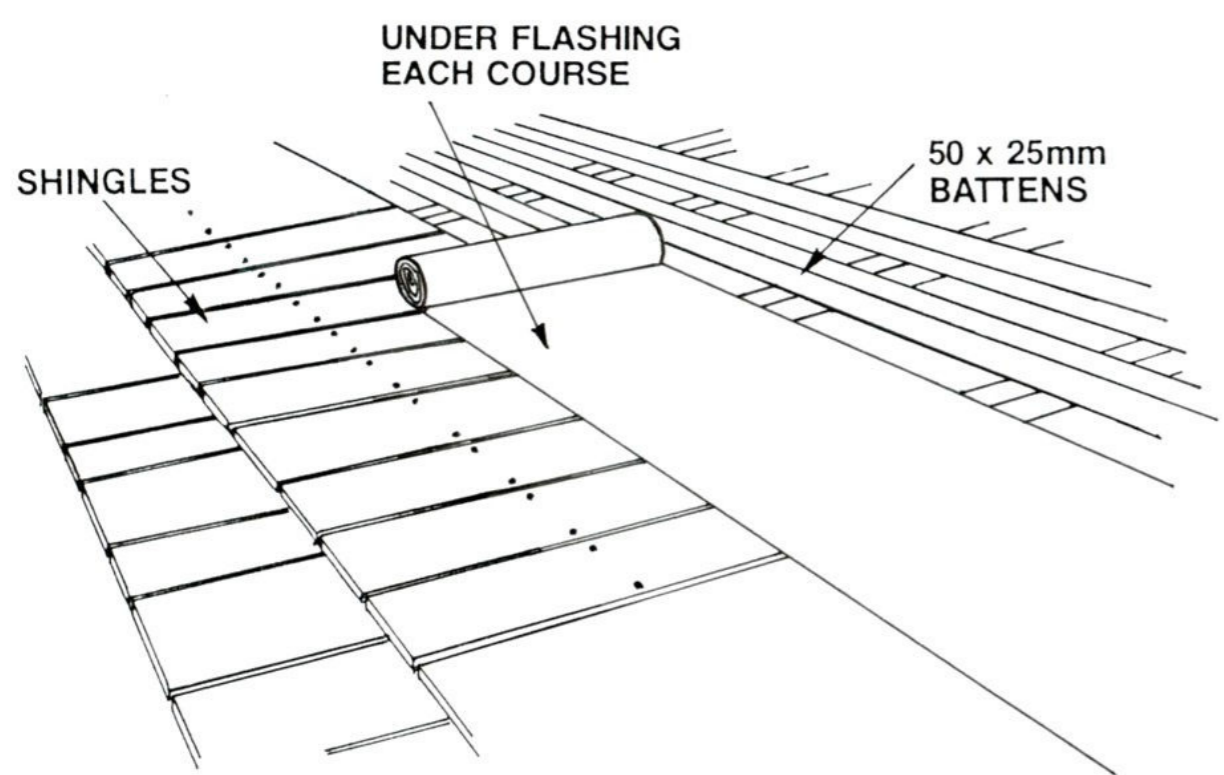
South Pacific Shingles -Timber shingles on heavy weight bituminous bldg paper

Plywood or battens to manufacturers specifications (If required to approved cavity system on specified underlay

South Pacific Shingles
-Timber shingles on heavy weight bituminous bldg paper

Plywood or battens to manufacturers specifications (If required to approved cavity system on specified underlay

Interlace Underlay Method

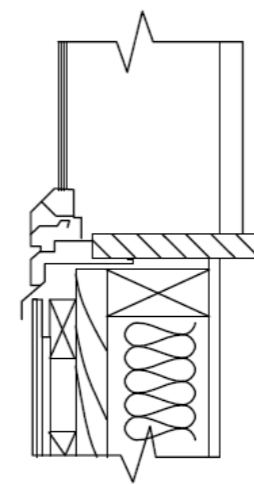


Chase copper flashing or similar into jamb

6x6 groove

South Pacific Shingles - timber shingles on heavy weight bituminous bldg paper on plywood or battens to manufacturers specifications

Typical Wall Detail



135