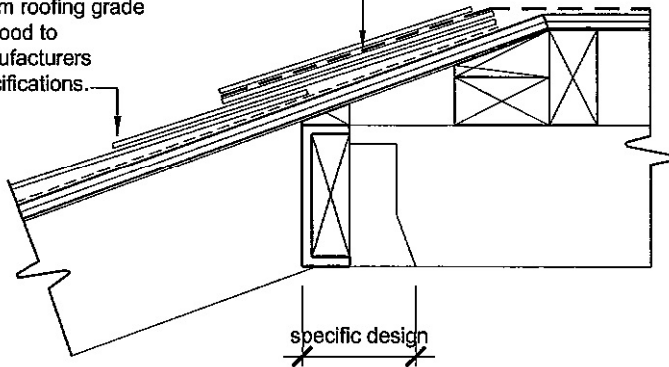


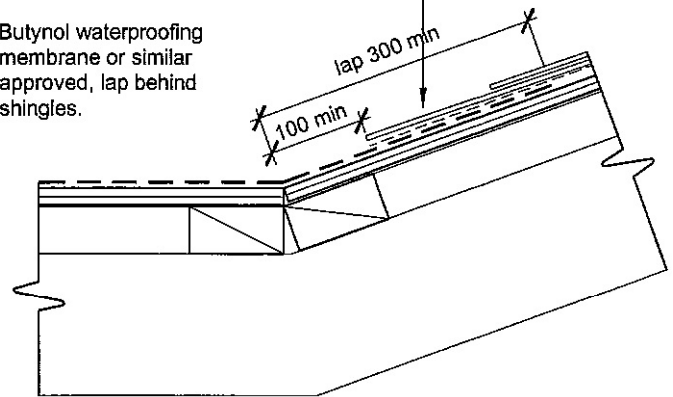
Butynol waterproofing membrane or similar approved, last shingle over butynol.

Owens Corning asphalt shingles on 15mm roofing grade plywood to manufacturers specifications.



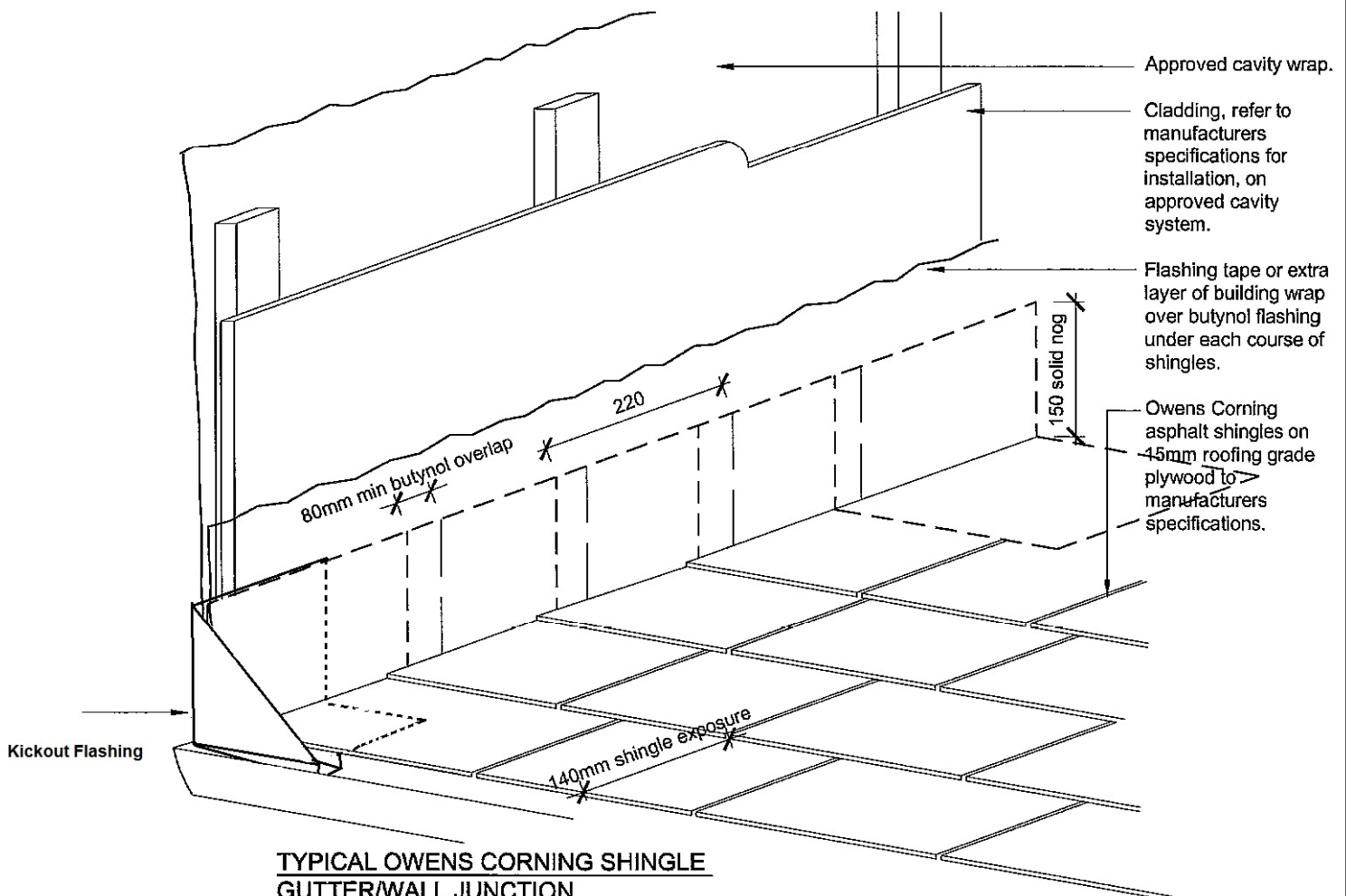
Owens Corning asphalt shingles on 15mm roofing grade plywood to manufacturers specifications.

Butynol waterproofing membrane or similar approved, lap behind shingles.



TYPICAL OWENS CORNING SHINGLE ROOF/FLAT ROOF FLASHING

TYPICAL OWENS CORNING SHINGLE ROOF/FLAT ROOF FLASHING



TYPICAL OWENS CORNING SHINGLE GUTTER/WALL JUNCTION

All measurements on this drawing must be checked on building site. With this drawing SPS Roofing & Building Materials Ltd provides only an idea and consequently has no influence on quality of the actual installation performed on the roof.

SPS ROOFING AND BUILDING MATERIALS LTD

Tel. 0-9-573-3017

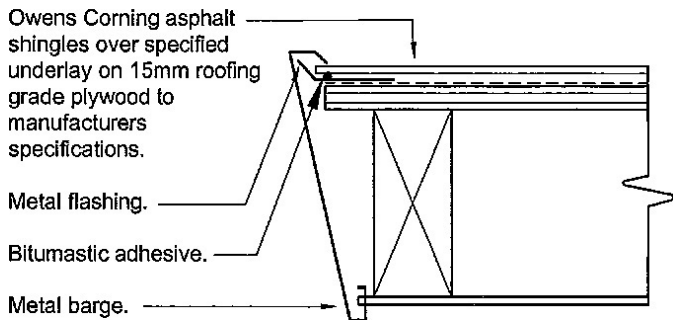
Email: sales@southpacificshingles.co.nz

OWENS SHINGLE ROOF DETAILS
NOT TO SCALE

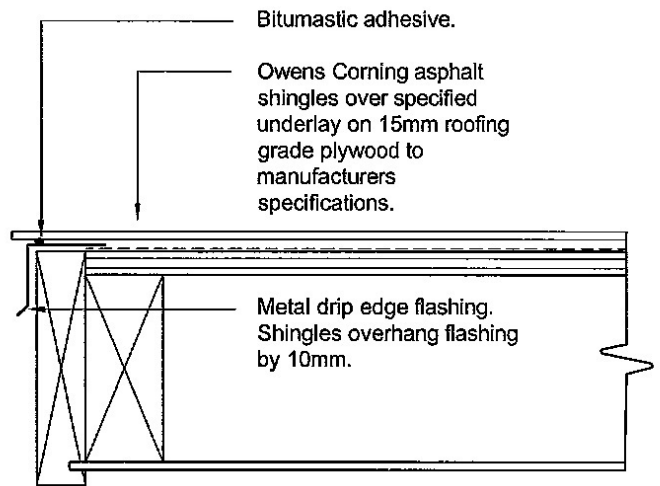
Version 1

1 of 6

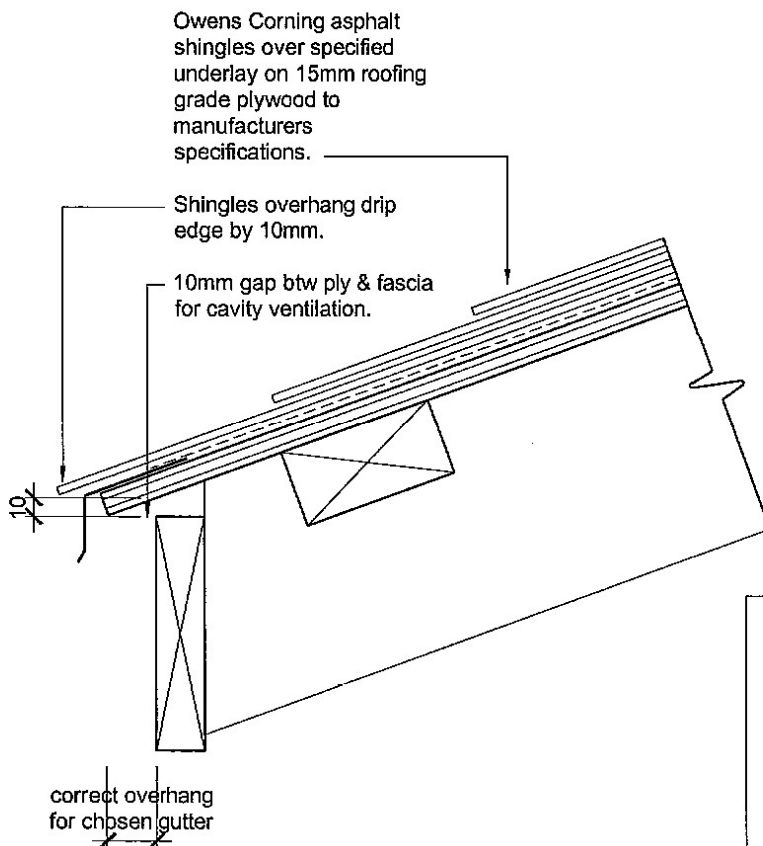
1/12/16



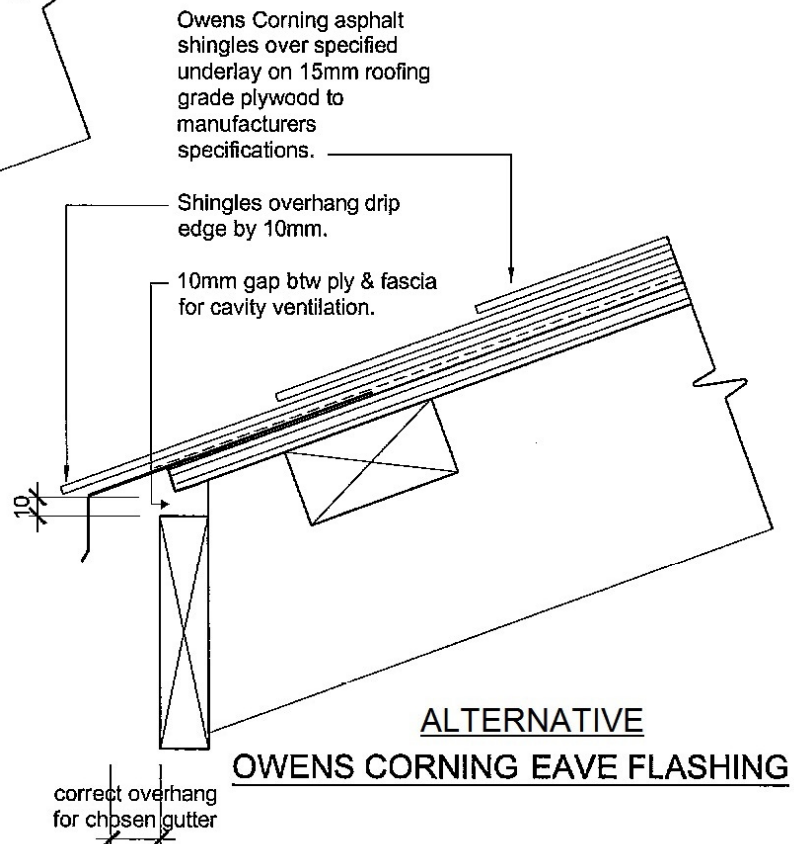
TYPICAL OWENS CORNING METAL BARGE FLASHING



TYPICAL OWENS CORNING TIMBER BARGE FLASHING



TYPICAL OWENS CORNING EAVE FLASHING



ALTERNATIVE OWENS CORNING EAVE FLASHING

All measurements on this drawing must be checked on building site.
With this drawing SPS Roofing & Building Materials Ltd provides only an idea and consequently has no influence on quality of the actual installation performed on the roof.

SPS ROOFING AND BUILDING MATERIALS LTD

Tel. 0-9-573-3017

Email: sales@southpacificshingles.co.nz

OWENS SHINGLE ROOF DETAILS
NOT TO SCALE

Version 1

2 of 6
1/12/16

Vented ridge with capping over.

Owens Corning asphalt shingles over specified underlay on 15mm roofing grade plywood to manufacturers specifications.

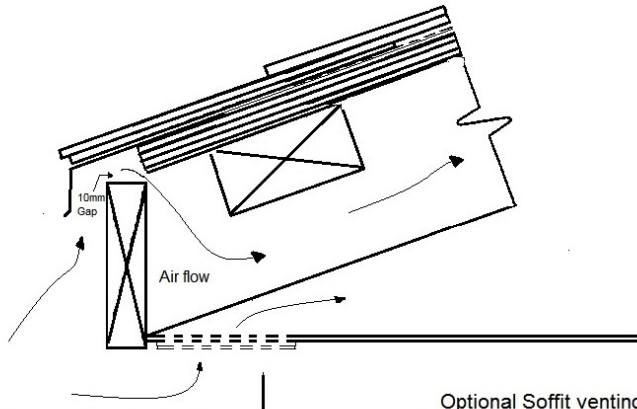
Predesigned trusses set at centres to suit plywood sheet sizes.

Air flow

Air flow

30 min

TYPICAL OWENS CORNING VENTED RIDGE



TYPICAL EAVE AND SOFFIT VENT DETAIL

Optional Soffit venting to replace eave vent
(Equivalent Eave vent volume must be maintained)

Ply cut short to create 15mm air gap

Metal flashing

Modified Ridge Venting

Owens Corning asphalt shingles on 15mm roofing grade plywood to manufacturers specifications.

Air flow

Air flow

Cladding, refer to manufacturers specifications for installation, on approved cavity system on specified underlay.

TYPICAL OWENS CORNING VENTED ROOF TO PEAK

SPS ROOFING AND BUILDING MATERIALS LTD

Tel. 0-9-573-3017

Email: sales@southpacificshingles.co.nz

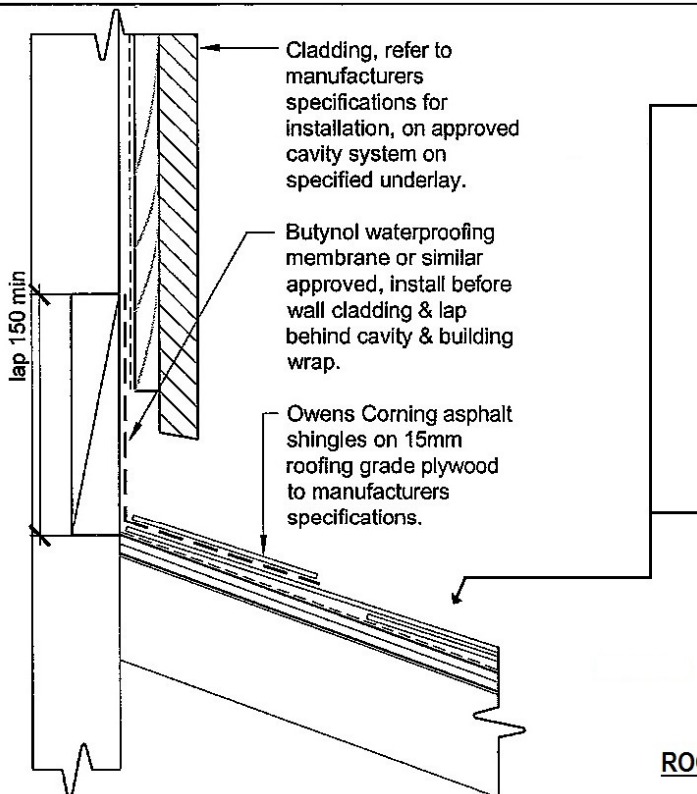
OWENS SHINGLE ROOF DETAILS
NOT TO SCALE

Version 1

3 of 6

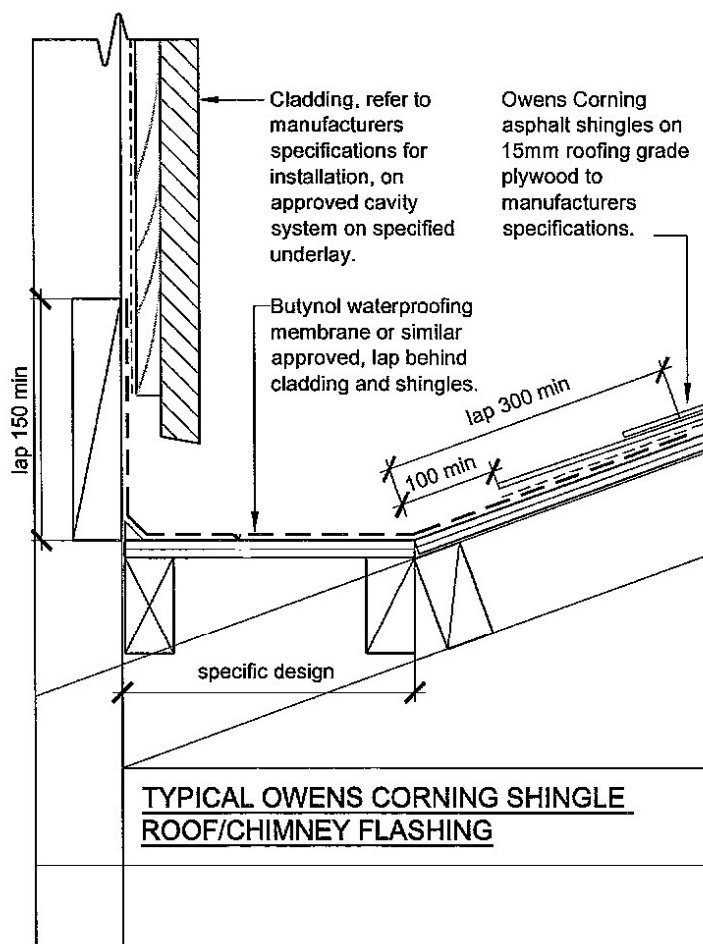
1/12/16

All measurements on this drawing must be checked on building site.
With this drawing SPS Roofing & Building Materials Ltd provides only an idea and consequently has no influence on quality of the actual installation performed on the roof.



TYPICAL OWENS CORNING SHINGLE APRON FLASHING - ROOF TO WALL

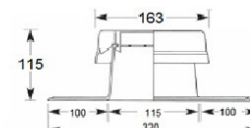
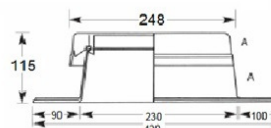
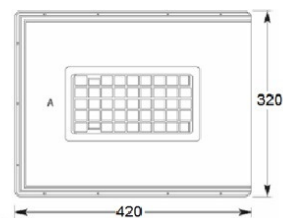
NOTE: This detail to be used for all "Roof to Wall" Junctions, regardless of cladding type.



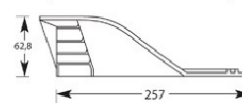
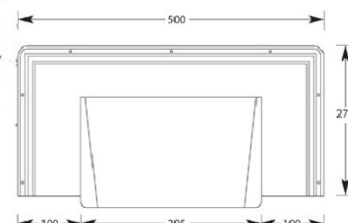
TYPICAL OWENS CORNING SHINGLE ROOF/CHIMNEY FLASHING



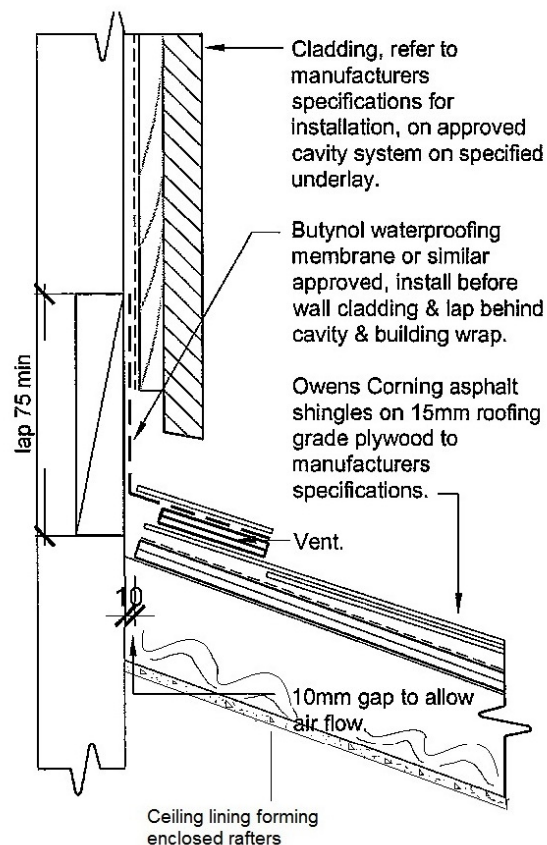
HIGH PROFILE ROOF VENT
Use for roof pitches 17 deg and under



LOW PROFILE ROOF VENT
Use for roof pitches over 17 deg



ROOF VENT OPTIONS



TYPICAL OWENS CORNING SHINGLE VENTED APRON FLASHING - ROOF TO WALL

NOTE: This detail to be used for all "Roof to Wall" Junctions, with enclosed rafters

All measurements on this drawing must be checked on building site. With this drawing SPS Roofing & Building Materials Ltd provides only an idea and consequently has no influence on quality of the actual installation performed on the roof.

SPS ROOFING AND BUILDING MATERIALS LTD

Tel. 0-9-573-3017

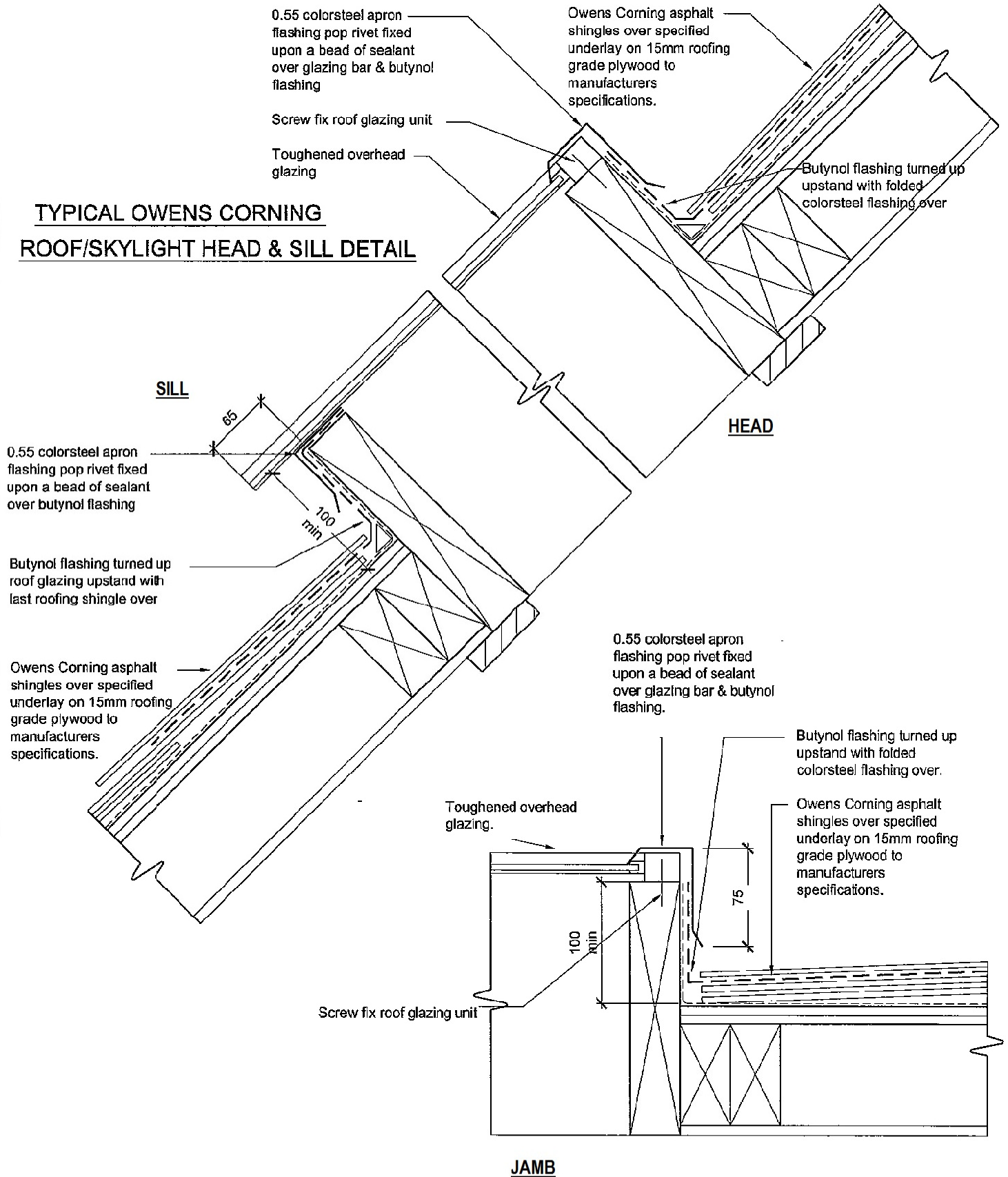
Email: sales@southpacificshingles.co.nz

OWENS SHINGLE APRON & CHIMNEY DETAILS
NOT TO SCALE

4 of 6

Version 1 1/12/16

TYPICAL OWENS CORNING ROOF/SKYLIGHT HEAD & SILL DETAIL



TYPICAL OWENS CORNING

All measurements on this drawing must be checked on building site. With this drawing SPS Roofing & Building Materials Ltd provides only an idea and consequently has no influence on quality of the actual installation performed on the roof.

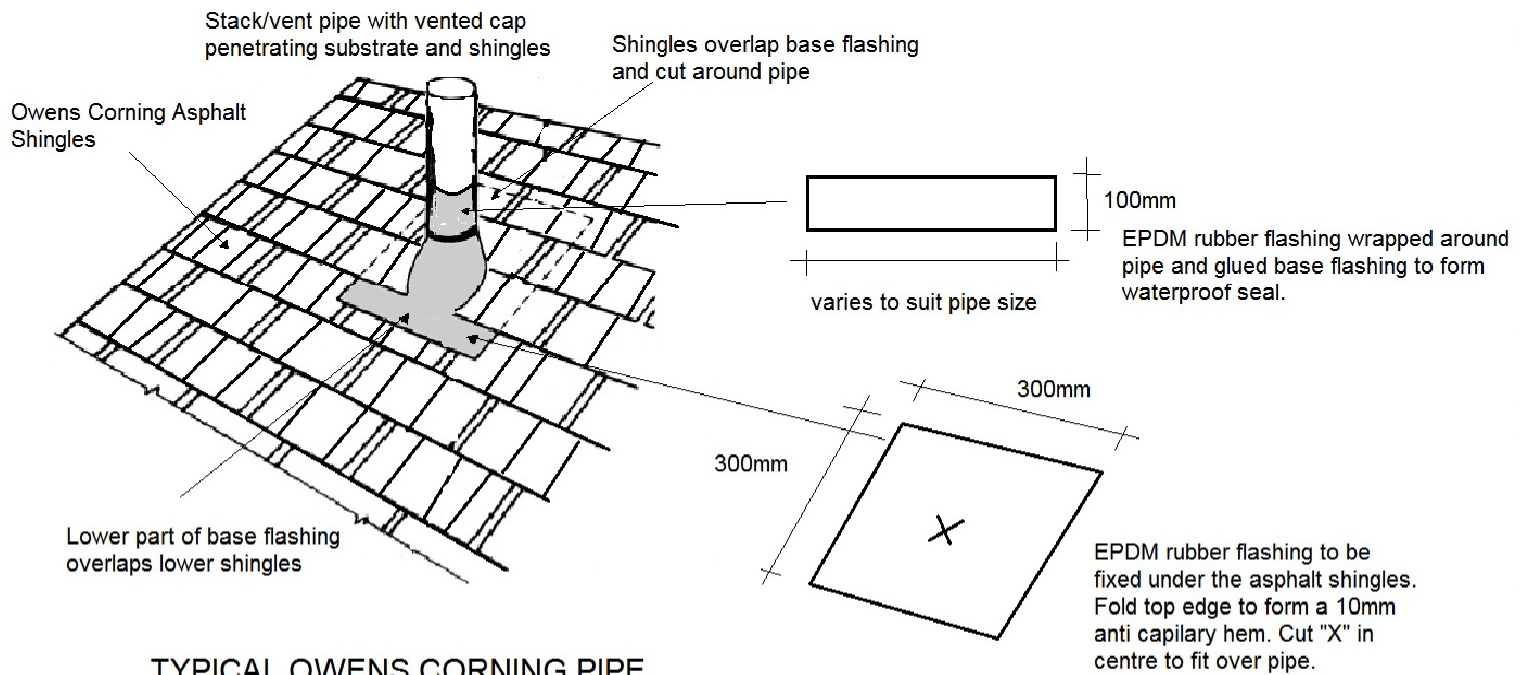
SPS ROOFING AND BUILDING MATERIALS LTD

Tel. 0-9-573-3017

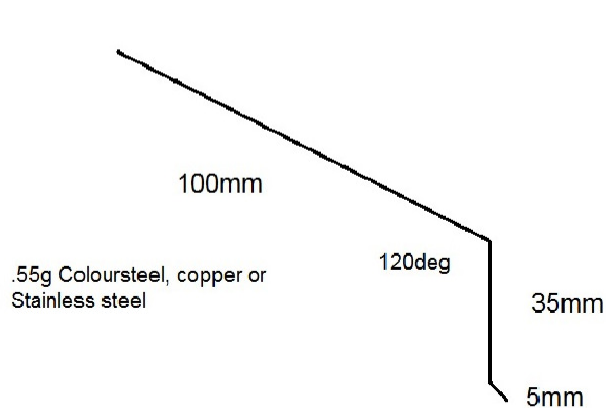
Email: sales@southpacificshingles.co.nz

OWENS CORNING SKYLIGHT DETAILS
NOT TO SCALE

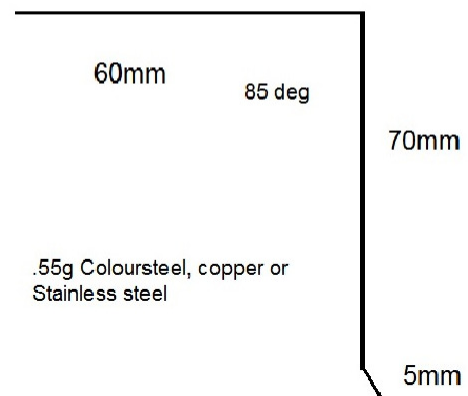
5 of 6
Version 1 1/12/16



TYPICAL OWENS CORNING PIPE PENETRATION FLASHING



STANDARD EAVE FLASHING



STANDARD BARGE FLASHING

All measurements on this drawing must be checked on building site.
With this drawing SPS Roofing & Building Materials Ltd provides only an idea and consequently has no influence on quality of the actual installation performed on the roof.

SPS ROOFING AND BUILDING MATERIALS LTD

Tel. 0-9-573-3017

Email: sales@southpacificshingles.co.nz

OWENS CORNING FLASHING DETAILS
NOT TO SCALE

6 of 6

Version 1 1/12/16